



Network

Dome

XNV-6083Z

2MP AI Vandal Dome Camera



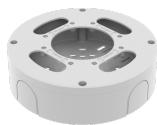
Key Features

- 2MP resolution
- 2.8~12mm (4.3x) motorized varifocal
- Color: 0.01Lux(F1.4, 1/30sec, 30IRE)
- B/W : 0.001Lux(F1.4, 1/30sec, 30IRE), 30/25fps
- Maximum 120fps/100fps(60Hz/50Hz)(WDR off)
- Day & Night (ICR), extremeWDR (150 dB)
- Hard-coated dome bubble
- WiseNR II (Based on AI engine), WiseStreamIII (Based on AI engine)
- Analytics events based on AI engine (NPU) : Object detection (Person/Face/Vehicle - car, truck, bus, bicycle, motorcycle/License plate), IVA (Virtual line/Area, Enter/Exit, Loitering, Direction, Intrusion)
- Analytics events : Defocus detection, Motion detection, Tampering, Fog detection, Audio detection, Sound classification, Shock detection, Appear/Disappear
- IP66/IP67/IP6K9K, NEMA4X, IK10+

Compatible Accessories (Optional)



SBP-180HWM1



SBV-180BW



SBV-180WW



SBP-150CMI



SBP-300CMI



SBP-300CMW1



SBP-900CMW



SBP-300CMTW



SBP-300CMTS



SBP-300WMW



SBP-300WMW1



SBP-390WMW2



SBD-180PMW



SBP-300PMW2

XNV-6083Z

2MP AI Vandal Dome Camera



Specifications

| | |
|-----------------------------|--|
| Video | |
| Imaging Device | 1/2.8" CMOS |
| Resolution | 1920x1080, 1280x1024, 1280x960, 1280x720, 1024x768, 800x600, 800x448, 720x576, 720x480, 640x480, 640x360, 320x240 |
| Max. Framerate | H.265/H.264: Max. 120fps/100fps(60Hz/50Hz)(WDR off) Max. 60fps/50fps(60Hz/50Hz)(WDR on) MJPEG: Max. 30fps |
| Min. Illumination | Color: 0.01Lux(F1.4, 1/30sec, 30IRE) BW: 0.001Lux(F1.4, 1/30sec, 30IRE), 30/25fps Color: 0.02Lux(F1.4, 1/60sec, 30IRE) BW: 0.002Lux(F1.4, 1/60sec, 30IRE), 60/50fps Color: 0.04Lux(F1.4, 1/120sec, 30IRE) BW: 0.004Lux(F1.4, 1/120sec, 30IRE), 120/100fps |
| Lens | |
| Focal Length (Zoom Ratio) | 2.8~12mm(4.3x) motorized varifocal |
| Max. Aperture Ratio | F1.4(Wide)~F3.6(Tele) |
| Angular Field of View | H: 120°(Wide)~27°(Tele) V: 63°(Wide)~15°(Tele) D: 143°(Wide)~32°(Tele) |
| Min. Object Distance | 0.5m(1.64ft) |
| Focus Control | Simple focus, Manual |
| Lens Type | DC auto iris with hall sensor(IR corrected) |
| Pan / Tilt / Rotate | |
| Pan / Tilt / Rotate Range | Remote adjustment(Max. 200cycles) 0°~350° / 0°~85° / 0°~340° |
| Operational | |
| Camera Title | Displayed up to 85 characters |
| Day & Night | Auto(ICR) |
| Backlight Compensation | BLC, HLC, WDR, SSDR |
| Wide Dynamic Range | extremeWDR(150dB) |
| Digital Noise Reduction | WiseNR II (Based on AI engine), SSNR V |
| Digital Image Stabilization | Support |
| Defog | Support |
| Motion Detection | 8ea, 8point Polygonal zones |
| Privacy Masking | 32ea, 4point Quadrangle zones - Color: Gray/Green/Red/Blue/Black/White - Mosaic |
| Gain Control | Off / Max Gain / Manual |
| White Balance | ATW / NarrowATW / AWC / Manual / Indoor / Outdoor |

Design and specifications are subject to change without notice. The latest product information / specification can be found at HanwhaVision.com.

Hanwha Vision is formerly known as Hanwha Techwin.

| | |
|-----------------------------------|--|
| LDC | Support(Fill/stretch mode) |
| Electronic Shutter Speed | Minimum / Maximum / Anti flicker(2~1/12,000sec) prefer shutter control(Based on AI engine) |
| Digital PTZ | Support(Preset, Group) |
| Video Rotation | Flip, Mirror, Hallway view(90°/270°) |
| Analytics | Classified object type: Person/Face/Vehicle(Type: car/bus/truck/motorcycle/bicycle)/License plate Attributes: Vehicle(Type: car/bus/truck/motorcycle/bicycle) Support DetectionShot Analytics events based on AI engine - Object detection, Virtual line(Crossing/Direction), Virtual area(Loitering/Intrusion/Enter/Exit), Motion detection Analytics events - Defocus detection, Tampering, Fog detection, Virtual area(Appear/Disappear) * Audio detection, Sound classification(with NW I/O box SPM-4210) |
| Business Intelligence | Based on AI engine: People/Vehicle counting |
| Alarm Triggers | Analytics, Network disconnect, Alarm input, App event, Time schedule, MQTT subscription |
| Alarm Events | When alarm trigger occurred - File upload(image): e-mail/FTP/SFTP - File upload(video clip): FTP/SFTP - Notification: e-mail - Recording: SD/SDHC/SDXC or NAS recording at event triggers - Alarm output(with NW I/O box SPM-4210) - Handover: PTZ preset, send message by HTTP/HTTPS/TCP - MQTT: publication |
| Network | |
| Ethernet | Metal shielded RJ-45(10/100/1000BASE-T) |
| Video Compression | H.265/H.264: Main/Baseline/High, MJPEG |
| Smart Codec | Manual(5ea area), WiseStreamIII(Based on AI engine) |
| Video Quality Adjustment | H.264/H.265: Target bitrate level control MJPEG: Target bitrate level control |
| Bitrate Control | H.264/H.265: CBR or VBR MJPEG: VBR |
| Streaming | Unicast(20 users) / Multicast Multiple streaming(Up to 10 profiles, 3 virtual channel support) |
| Protocol | IPv4, IPv6, TCP/IP, UDP/IP, RTP(UDP), RTP(TCP), RTCP, RTSP, NTP, HTTP, HTTPS, SSL/TLS, DHCP, FTP/SFTP, SMTP, ICMP, IGMP, SNMPv1/v2c/v3(MIB-2), ARP, DNS, DDNS, QoS, UPnP, Bonjour, LLDP, CDP, SRTP(TCP, UDP Unicast), MQTT |
| Application Programming Interface | ONVIF Profile S/G/T/M SUNAPI(HTTP API) Wisenet open platform |
| Security | |
| OS / Firmware Protect | Encrypted Firmware, Secure boot, Signed Firmware |
| User authentication | Digest Authenticaon, Prevent brute-force attacks |
| Network authentication | IEEE 802.1X(EAP-TLS, EAP-LEAP, EAP-PEAP, MSCHAPv2) |
| Secure Communication | HTTPS, WSS(WebSocket Secure), SRTP |
| Access Control | IP-based access control |
| Data Protect | Encryption Credentials, Encrypt compress for live recording file export |
| Audit | Access / System / Event Log management |
| Device ID | Device certificate(Hanwha Vision Root CA) |
| Secure Storage | TPM, HTPM(Hanwha trusted platform module), SDcard partition encrypt |
| Security Certificate | TPM with FIPS 140-2 level 2 |
| General | |
| Webpage Language | English, Korean, Chinese, French, Italian, Spanish, German, Japanese, Russian, Portuguese, Czech, Polish, Turkish, Dutch, Hungarian, Greek |

Design and specifications are subject to change without notice. The latest product information / specification can be found at HanwhaVision.com.

Hanwha Vision is formerly known as Hanwha Techwin.

| | |
|--------------|--|
| Edge Storage | Micro SD/SDHC/SDXC 2slot Max. 1TB(512GBx2) |
| Memory | 2GB RAM, 512MB Flash |

Environmental & Electrical

| | |
|----------------------------------|---|
| Operating Temperature / Humidity | -50°C~+55°C(-58°F~+131°F) * Start up should be done at above -30°C 0~100%RH(condensing) Humidity control with AIR vent |
| Storage Temperature / Humidity | -50°C~+60°C(-58°F~+140°F) / 0~90% RH |
| Certification | IP66/IP67/IP6K9K, NEMA4X, IK10+ |
| Input Voltage | PoE+(IEEE802.3at type 2, Class4) |
| Power Consumption | PoE+: Max 22.5W, typical 11.0W |

Mechanical

| | |
|-----------------------------------|---|
| Color / Material | White / Aluminum Bubble: Hard-coated dome |
| RAL Code | RAL9003 |
| Product Dimensions / Weight | ø180x135mm(ø7.09x5.31"), 2000g(4.41 lb) |
| Compatible Conduit hole / Gangbox | 19.1mm(3/4")(M25) single, double, 4" octagon, 4" square |
| Hanging Mount (Dome) | SBP-180HWM1 |
| Weather Cap (Dome) | Included |
| Backbox | SBV-180BW/WW |
| Ceiling Mount (Assy) | SBP-150CMI/300CMI, SBP-300CMW1/900CMW, SBP-300CMTW, SBP-300CMTS |
| Wall Mount | SBP-300WMW/WMW1, SBP-390WMW2 |
| Pole Mount | SBD-180PMW, SBP-300PMW2 |
| In-ceiling Mount | SHD-1370FPW |
| Parapet Mount | SBP-300LMW, SBP-156LMW1 |
| Corner Mount | SBP-300KMW1 |
| Cabinet | SBP-300NBW |
| Other Compatible Models | SPB-VAN89W, SPM-4210 |

Certifications & Standards

| | |
|-------------|--|
| EMC | EN 50121-4 FCC 47 CFR 15 Subpart B Class A ICES-3(A)/NMB-3(A) CE/UKCA - EN 55032 Class A, EN 50130-4, EN 61000-3-2, EN 61000-3-3 VCCI CISPR 32 Class A RCM AS/NZS CISPR 32 Class A KS C 9832 Class A, KS C 9835 |
| Safety | UL 62368-1, CAN/CSA C22.2 NO. 62368-1 IEC 62471 |
| Environment | EN IEC 63000 IEC 60529 IP66/IP67, ISO 20653 IP6K9K, IEC 62262 IK10+ NEMA 250 type 4X |

DORI (EN62676-4 standard)

| | |
|---------------------------|---|
| Detect (25PPM/ 8PPF) | Wide: 22.2m(72.74ft) / Tele: 159.9m(524.76ft) |
| Observe (63PPM/ 19PPF) | Wide: 8.9m(29.09ft) / Tele: 64.0m(209.90ft) |
| Recognize (125PPM/ 38PPF) | Wide: 4.4m(14.55ft) / Tele: 32.0m(104.95ft) |
| Identify (250PPM/ 76PPF) | Wide: 2.2m(7.27ft) / Tele: 16.0m(52.48ft) |

XNV-6083Z

XNV-6083Z

2MP AI Vandal Dome Camera



CAD

Unit:mm [inch]

