



# SHD-1101FW

In-ceiling Mount



## Key Features

- Color: White
- Material : PC(Polycarbonate)
- Dimensions : 175x162x147mm (6.89x6.38x5.79")
  - ※ Ceiling hole size : ø140mm (ø5.51")
- Max. load : 0.6kg (1.32lb)
  - ※ Maximum load of ceiling board : 3kg (6.61lb)
- Weight : 310g (0.68lb)

## Compatible Accessories (Optional)



QND-C8013R



QND-C8023R

# SHD-1101FW

In-ceiling Mount



## Specifications

Mechanical	
Color	White
Material	PC(Polycarbonate)
RAL code	RAL9003
Product dimensions / weight	175x162x147mm (6.89x6.38x5.79") / 310g (0.68lb) ※ Ceiling hole size : ø140mm (ø5.51")
Tile thickness	10~60mm (0.4~2.4")
Max. load	0.6kg (1.32lb) ※ Maximum load of ceiling board : 3kg (6.61lb)
Supported products	QND-C8013R/C8023R

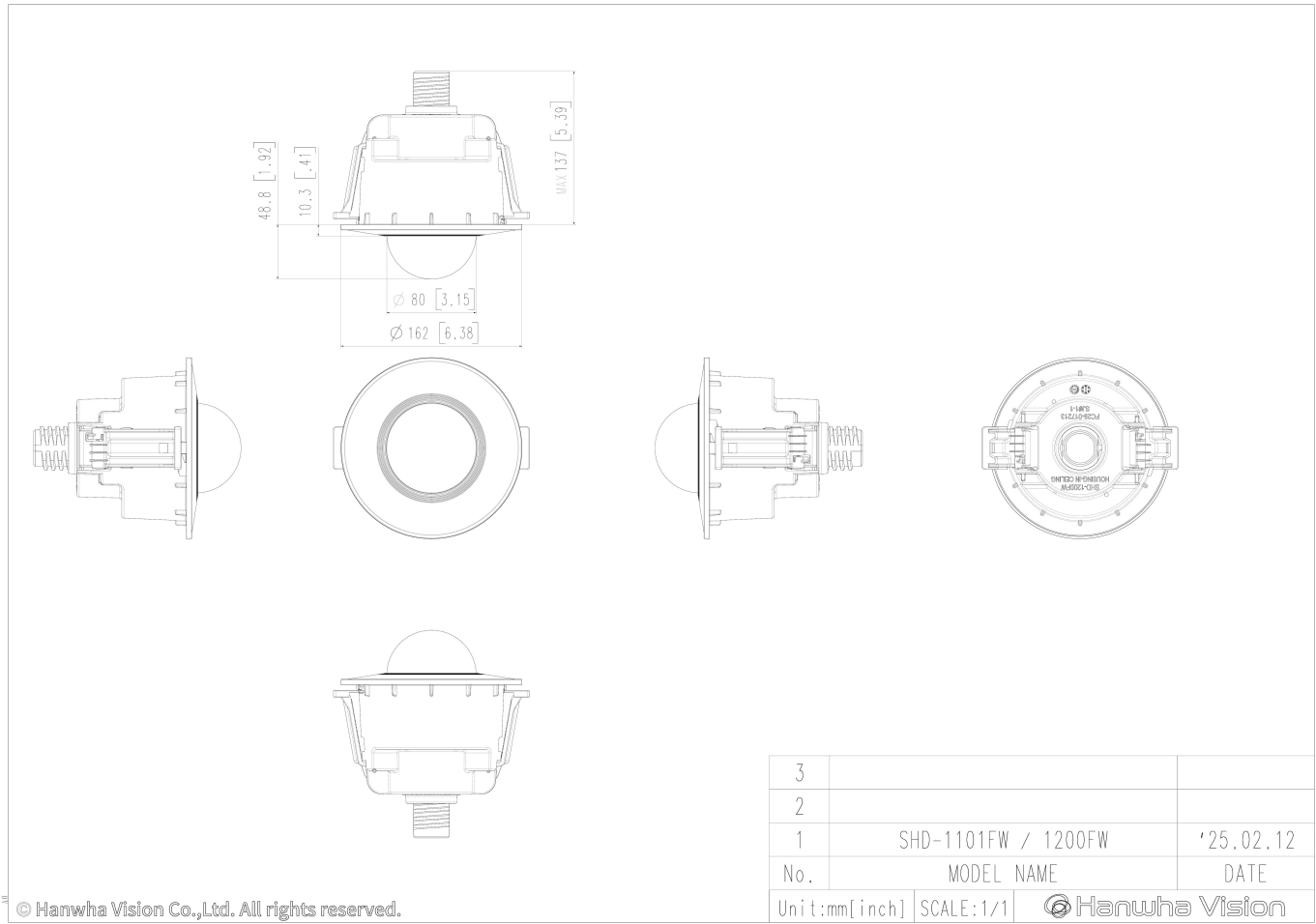
# SHD-1101FW

In-ceiling Mount



CAD

Unit:mm [inch]



© Hanwha Vision Co.,Ltd. All rights reserved.