

# Chroma24 AI Camera

On-prem VIT04A-W



Powered by Chroma24 AI technology, this series of camera provides detail, full-color video even under low-light illumination. Within large aperture, large sensor and AI-ISP algorithm capture smooth, low noise video under dim environments, while WDR Pro enhances image quality in scenes with strong lighting contrast keeps the darkness in color detail.

## Features

● Hardware ● Software

**4 MP Resolution**  
Chroma24 AI camera



**F1.0 Aperture**  
Capture 4x more incoming light



**Dual Light Mode**  
Support warm light & infrared light



**WDR Pro 120dB**



**Outdoor-Rated**  
IP66 water resistant  
IK10 vandal resistant



**Chroma24**  
See color details under low-light

**Smart VCA**  
Accurate detect incidents



**Vision Object Analytic**  
Identify people,  
vehicles and attributes



**Trend-Micro™ IoT Security**  
Defend and  
quarantine vulnerability protection



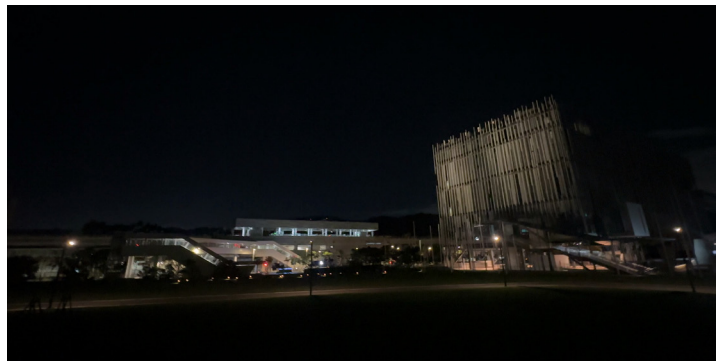
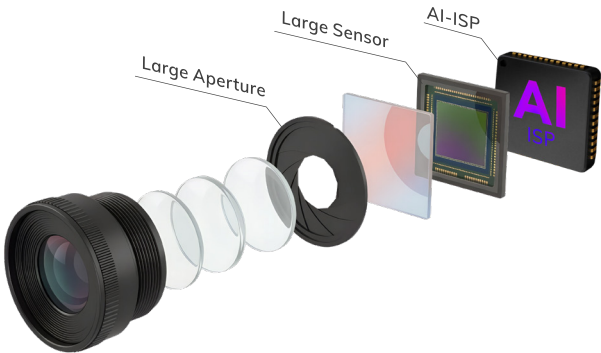
**Think Search with VORTEX**  
Intuitive describe with text to find footage



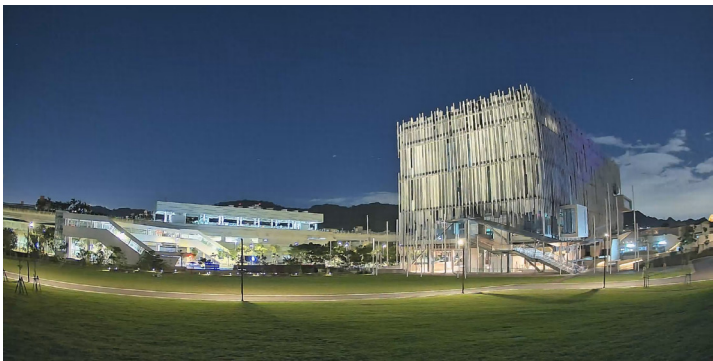
# Proactive Nighttime Deterrence

## See in low light — Powered by Chroma24

A large aperture and large sensor maximize light intake, while the AI-ISP intelligently enhances exposure and suppresses noise — delivering accurate color and detail below 3 lux, also balances highlights and shadows to deliver well-exposed, color-accurate images, users can see color where others see darkness.



iPhone Illumination



Chroma24

## See in darkness

The camera remains in discreet monitoring status until an object is detected below 0.5 lux illumination. Upon detection, the warm light instantly activates to capture clear, full-color footage.



# Proactively Detect Events with AI Analytics

## AI detection for accurate alarms

VIVOTEK **Smart VCA** offers precise object and attribute tracking, providing detailed video analytics for targeted monitoring and quick searches at night.



Detecting loitering in the darkness



Identifying faces in the darkness



Chasing in the darkness



Smart Motion



Line Crossing



Intrusion



Loitering



Face



Crowd



Missing Object



Unattended Object



Running



Parking Detection



Restricted Zone



Paid Licenses



## Complete Video Security with VIVOTEK Solution

Access and manage all devices and accounts through a single platform, providing accurate event monitoring and intuitive security system operation video investigation no matter where you are.



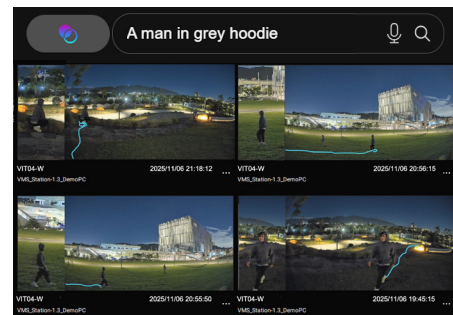
### Instant notification to aware incident

Integrated with VORTEX, key individuals can be promptly notified through mobile push on VORTEX app or email, enabling proactive deterrent measures and the prevention of violations.



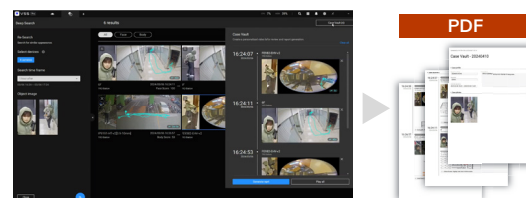
### Search results in color — Even at night

Effortlessly find evidence without scanning hours of footage. Think search allows for intuitive and precise video searches by inputting natural language descriptions (e.g., "red car speeding," "person in a yellow jacket", etc.). This powerful text-based search enables users to locate color snapshots of people, vehicles, and their paths accurately.



### Generate case report and export video in organized

Case Vault helps user to manage footage found through Think Search. Organize clips and export detailed case reports straight from search results, making case management easier.



## Reliable Security

Whether deployed on-premises or in the cloud, VIVOTEK's end-to-end security approach ensures reliable, standards-based protection to keep your surveillance data safe. With a comprehensive layered architecture, your system is secured at every stage—from device to transmission to cloud.

### Protect data on devices



Protect on-premises devices from cyber threats with Trend Micro™ IoT Security.



Signed firmware updates are authorized by VIVOTEK.



Secure Boot safeguards the camera's startup process from unauthorized or malicious code.

### Protect data in transit



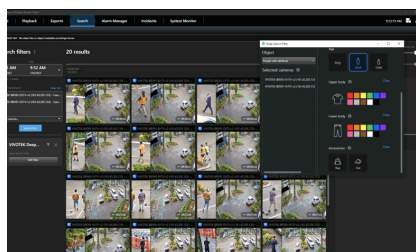
Secure your data in transit with AES-256, TLS 1.2 and TLS 1.3 encryption, reducing the risk of interception or data theft.

### Protect data on cloud



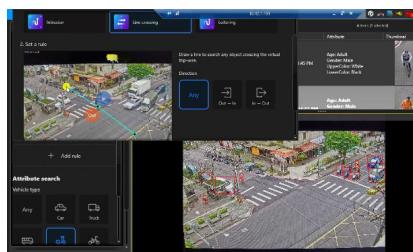
AES-256 encryption protects your privacy and security on the cloud, with end-to-end data protection across your network and system.

## Easily Manage on Milestone, Genetec and Device Manager



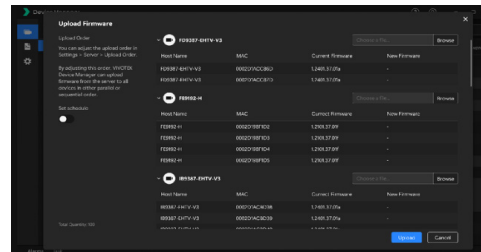
Genetec Security Center

Easily enhance VIVOTEK AI cameras with Milestone XProtect. Enable Deep Search, set search rules, and export detailed surveillance reports..



Genetec Security Center

Leverage Genetec Security Center with VIVOTEK AI cameras. Enable Deep Search, set search rules, and export detailed surveillance reports.




VIVOTEK Device Manager – Batch Configuration

Device Manager enables quick setup for cameras and NVRs, offering batch configurations, IP allocation, and seamless firmware updates to keep systems optimized.



Ordering Information

On-premise

Model	VIT04A-W
	
Max Resolution	4 MP
Lens	2.8 mm
Aperture	F1.0
HFOV	103.4°
Illuminators	30m IR/ Warm Light
Minimum Illumination	0.003lux @ F1.0 (Color) 0 lux with IR illumination on
Certifications	IP66, IK10
Chroma24	V
Deep Search	Supported on NVR, VSS, VORTEX
Think Search	Supported on VORTEX

Accessory

VIT04A-W



**AM-71B**  
Waterproof Conduit Box



**AM-21A(V02)**  
L-shape Bracket

Hybrid Cloud Solution

