

BioEntry W2

Outdoor IP Fingerprint Device



Suprema BioEntry W2 is a rugged fingerprint access control device featuring Suprema's next generation biometric technology and security platform. BioEntry W2 provides class-leading performance and security by featuring Suprema's latest fingerprint algorithm coupled by powerful quad-core CPU and LFD(live finger detection) technology. The device also provides added flexibility in system design by featuring multi card reading with dual-frequency RFID technology. Packed in a rugged IP67/IK09 housing with sleek metallic finish, BioEntry W2 is a perfect access control solution for tough environment and outdoor installation.

Features



Best-in-class Performance

- Latest Suprema algorithm
- 1.2GHz quad-core CPU



Improved Accuracy & Security

- New advanced Live Finger Detection(LFD) technique
- High-precision OP5 optical sensor



Expanded Capacity

- Max. 500k users/1 million text logs
- Large memory: 2GB Flash + 256 MB RAM



Rugged Structure

- IK09 impact protection
- IP67 ingress protection
- Ideal for outdoor installation



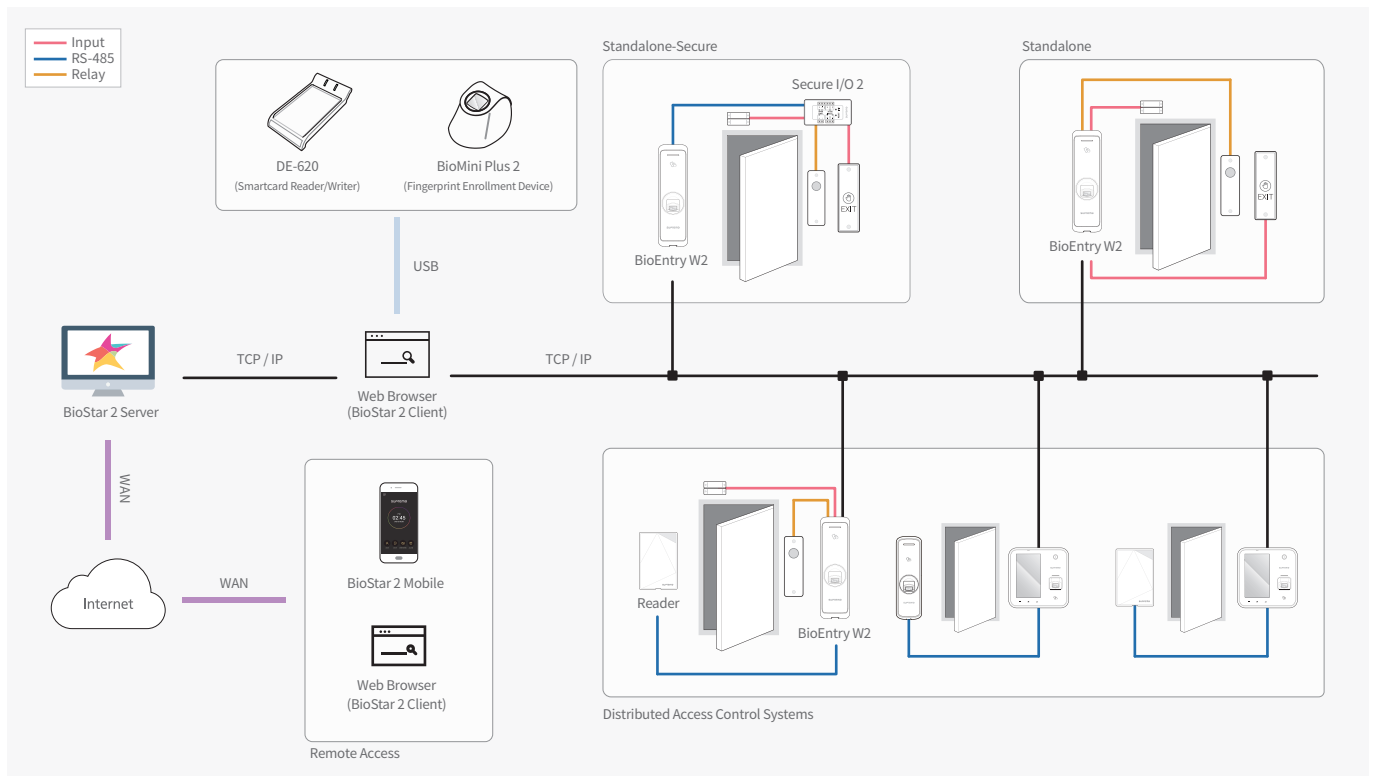
Multi RFID Card Reading

- LF(125KHz), HF(13.56MHz) dual-band
- Reads all card types that HID multiCLASS supports (EM/HID Prox/MIFARE/iCLASS/DESFire/FeliCa/NFC)

Specifications

Biometric	Fingerprint						
Sensor Type	Optical Sensor (OP5)						
Template	SUPREMA / ISO 19794-2 / ANSI 378						
Extractor / Matcher	MINEX certified and compliant						
LFD	Supported						
RF Option	<table border="1"> <tr> <th>BEW2-OHP</th> <th>BEW2-ODP</th> <th>BEW2-OAP</th> </tr> <tr> <td>125kHz HID Prox</td> <td>125kHz EM & 13.56Mhz MIFARE, MIFARE Plus, DESFire/EV1, FeliCa, NFC</td> <td>125kHz EM, HID Prox & 13.56Mhz MIFARE, MIFARE Plus, DESFire/EV1, FeliCa, iCLASS SE/SR/Seos, NFC</td> </tr> </table>	BEW2-OHP	BEW2-ODP	BEW2-OAP	125kHz HID Prox	125kHz EM & 13.56Mhz MIFARE, MIFARE Plus, DESFire/EV1, FeliCa, NFC	125kHz EM, HID Prox & 13.56Mhz MIFARE, MIFARE Plus, DESFire/EV1, FeliCa, iCLASS SE/SR/Seos, NFC
BEW2-OHP	BEW2-ODP	BEW2-OAP					
125kHz HID Prox	125kHz EM & 13.56Mhz MIFARE, MIFARE Plus, DESFire/EV1, FeliCa, NFC	125kHz EM, HID Prox & 13.56Mhz MIFARE, MIFARE Plus, DESFire/EV1, FeliCa, iCLASS SE/SR/Seos, NFC					
CPU	1.2 GHz Quad Core						
Memory	2GB Flash + 256 MB RAM						
Max. User (1:1)	500,000 (Based on one finger enrollment per user)						
Max. User (1:N)	100,000 (Based on one finger enrollment per user)						
Max. Finger per user	10						
Max. Text Log	1,000,000						
LED	Multi-Color						
Sound	Multi-tone Buzzer						
Ethernet	10/100 Mbps, auto MDI/MDI-X						
RS-485	1ch host or slave (selectable), OSDP V2.1.6						
Wiegand	1ch input or output (selectable)						
TTL	2ch input						
Relay	1 Relay						
PoE	Supported (IEEE 802.3af compliant)						
Ingress Protection	IP67						
Impact Protection	IK09						
Tamper	Supported						
Power	Voltage: DC 12V Current: Max. 600 mA						
Operating Temperature	-20°C ~ 50°C						
Operating Humidity	0% ~ 80%, non-condensing						
Dimensions (WxHxD, mm)	50 x 172 x 43.5						
Certificates	CE, FCC, KC, RoHS, REACH, WEEE						

System Configurations



Suprema Inc.

17F Parkview Tower, 248, Jeongjail-ro, Bundang-gu, Seongnam-si, Gyeonggi-do, 13554, Rep. of KOREA

Tel: +82 31 783 4502 | Fax: +82 31 783 4503 | Inquiry: sales@supremainc.com | www.supremainc.com

©2018 Suprema Inc. Suprema and identifying product names and numbers herein are registered trademarks of Suprema, Inc. All non-Suprema brands and product names are trademarks or registered trademarks of their respective companies. Product appearance, build status and/or specifications are subject to change without notice.

[AHL-BEW2-180806-05-EN]