

# VivoCam L2+ Series

VivoCam L2+ Managed PoE Switch



## Managing IP Surveillance • Managed L2+ Gigabit PoE Switch

The VivoCam L2+ series is the Layer 2 Plus managed PoE switch with IP surveillance management functions. This switch is not only a standard Layer 2 Plus managed PoE switch, but also able to set up and configure VIVOTEK IP cameras, Video servers and allows users to find all VIVOTEK devices and deploy a surveillance network system automatically.

The VivoCam L2+ series, also features Graphic View, such as Topology/Map view for controlling and understanding network structure and device situation, and Google Map integration to

view system situation status for outdoor applications. It not only features surveillance network environment set up functions, but troubleshooting and traffic monitoring functions also help users to clarify and troubleshoot any connection or device issue. In addition, users can also import and export their VIVOTEK IP camera/Video server configuration files, and batch VIVOTEK cameras firmware upgrade through the VivoCam L2+ Managed PoE switch Web UI. With all of these features and more, the VivoCam L2+ series, is the best PoE solution to install and manage your VIVOTEK surveillance devices.

### Key Features

#### Managing IP Surveillance

- The Root VivoCam Will Auto-Sync With All Sub VivoCam Switches
- Auto Discovery and Classification of Network Devices
- Batch Camera Configuration-File Import & Export
- Batch Camera Network/Login Configuration
- Auto Generated Surveillance Topology View
- Easy Tag VLAN Configuration In Topology View
- Smart Device-Management In Topology View
- PoE On/Off Control In Topology View
- Display IP Camera Live Stream in Topology View, Floor View and Google Map View

#### Managed Layer 2 Plus PoE Switch

- Supports L2+ Managed Features
- Supports DHCP Server
- Supports IPv4/IPv6 L3 Static Route
- Supports IEEE802.1Q VLAN (up to 4096), Double Tag (Q-in-Q)
- Supports IEEE802.1v Protocol VLAN and MAC-based VLAN
- Supports 802.1d (STP), 802.1w (RSTP) and 802.1s (MSTP)
- Supports LACP and Static Link Aggregation
- Supports SNMP v1/v2c/v3 for Management
- Supports HTTPs/SSL/SSHv1&v2 for Secured Connection
- Supports Dual Image for Switch Firmware Backup
- Supports Diagnostics for Connection and Cable Status

# Feature Highlight - Managing IP Surveillance

Devices List

Auto-refresh

Show  entries

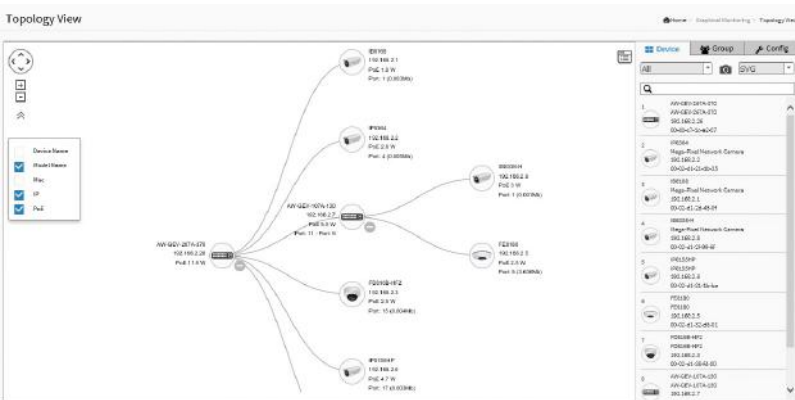
Remove	Status	Device Type	Model Name	Device Name	MAC	IP Address
<input type="checkbox"/>	Online	IP Camera	FE8174	Mega-Pixel Network Camera	00-02-01-2A-51-2B	192.168.40.20
<input type="checkbox"/>	Online	IP Camera	FD8154V	Mega-Pixel Network Camera	00-02-01-38-06-4E	192.168.40.83
<input type="checkbox"/>	Online	IP Camera	IP3304	Mega-Pixel Network Camera	00-02-01-22-97-35	192.168.40.85
<input type="checkbox"/>	Online	IP Camera	FD8182-F2	FD8182-F2	00-02-01-38-F3-8D	192.168.40.86
<input type="checkbox"/>	Online	IP Camera	FD6302E	Mega-Pixel Network Camera	00-02-01-21-20-05	192.168.40.88
<input type="checkbox"/>	Online	IP Camera	IB6338-H	IB6338-H	00-02-01-2F-99-81	192.168.40.89
<input type="checkbox"/>	Online	IP Camera	FD8173-H	Mega-Pixel Network Camera	00-02-01-38-5B-9F	192.168.40.94
<input type="checkbox"/>	Online	IP Camera	CC5136	Mega-Pixel Network Camera	00-02-01-1D-21-83	192.168.40.95
<input type="checkbox"/>	Online	IP Camera	IP3335H	Mega-Pixel Network Camera	00-02-01-25-33-E7	192.168.40.96
<input type="checkbox"/>	Online	IP Camera	IZ3361-EH	IZ3361-EH	00-02-01-43-69-5A	192.168.40.97

Showing 41 to 50 of 217 entries

Previous 1 2 3 4 5 6 7 8 9 10 11 12 Next

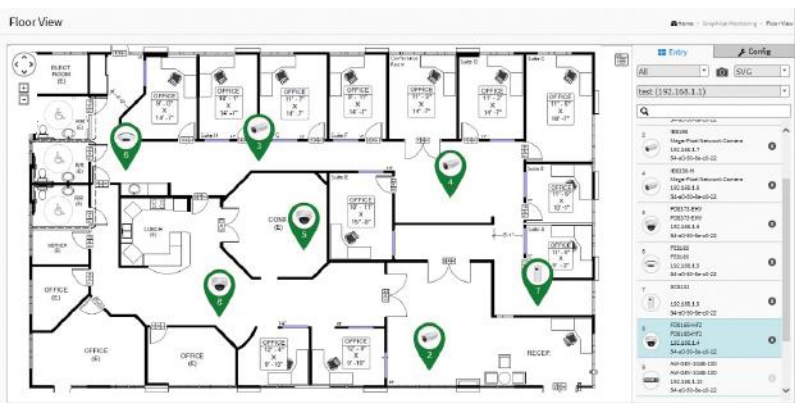
## Auto Discovery

AW-GEV L2+ Series can automatically discover any VIVOTEK's devices such as network cameras, video servers, CMS and NVR with a simple click of mouse.



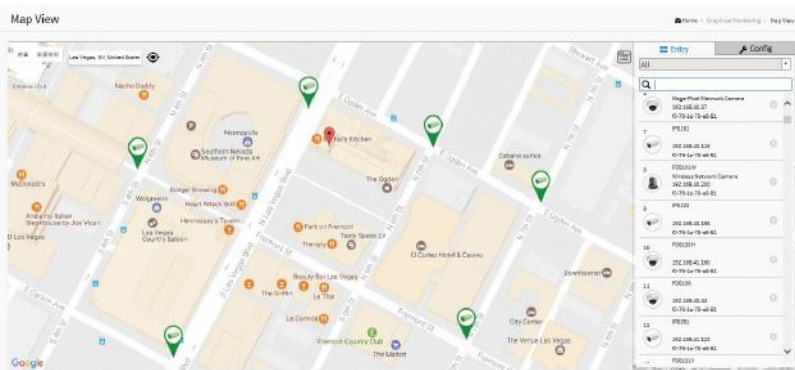
## Graphic View - Topology View

Auto-generated Topology View allows administrators to quickly view and export a complete network topology in SVG/PNG/PDF format for easier inspection and planning.



## Graphic View - Floor View

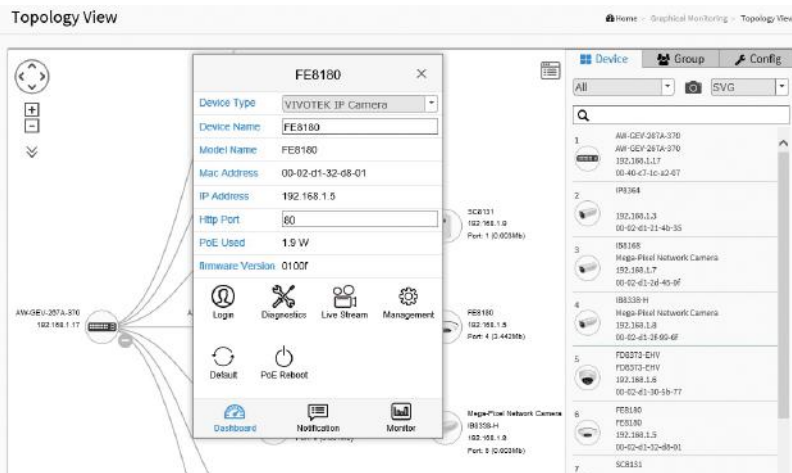
Upload custom floor images. Floor View allows for quick location of deployed surveillance devices and for export of this view in SVG/PNG/PDF format for easier inspection and planning.



## Graphic View - Google Map

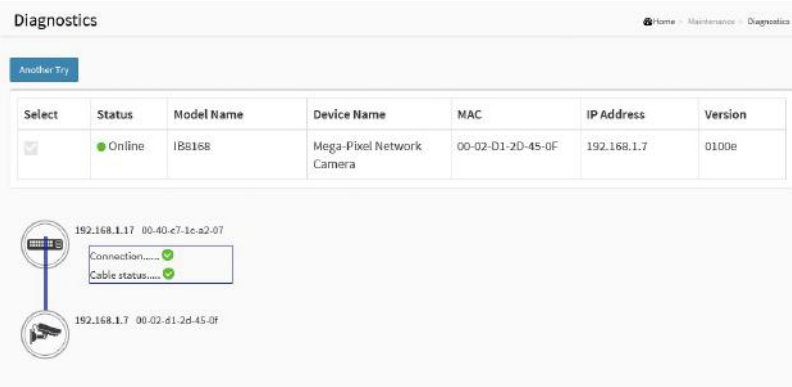
Locate surveillance devices on Google map to simplify multi-site management of any large scale deployments.

# Feature Highlight - Managing IP Surveillance



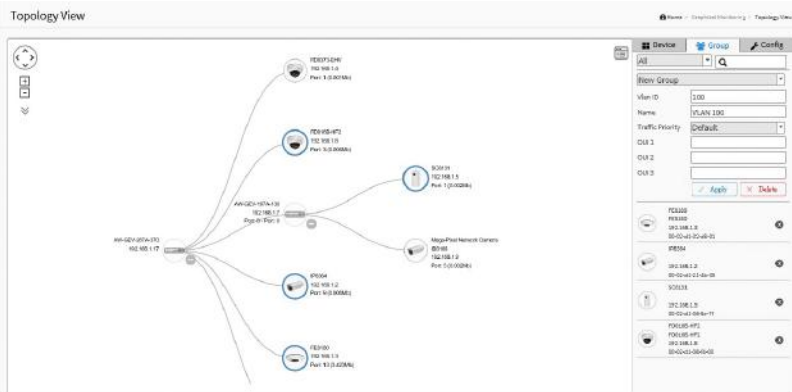
## Device Management

Easy network configuration, open camera Web UI, diagnose camera connection and cable status, display camera live stream, change camera network setting, restore default, PoE consumption, and PoE on/off control.



## Device Status

Device status page shows the real-time verification result of each connection between switch port and device.



## VLAN Setting

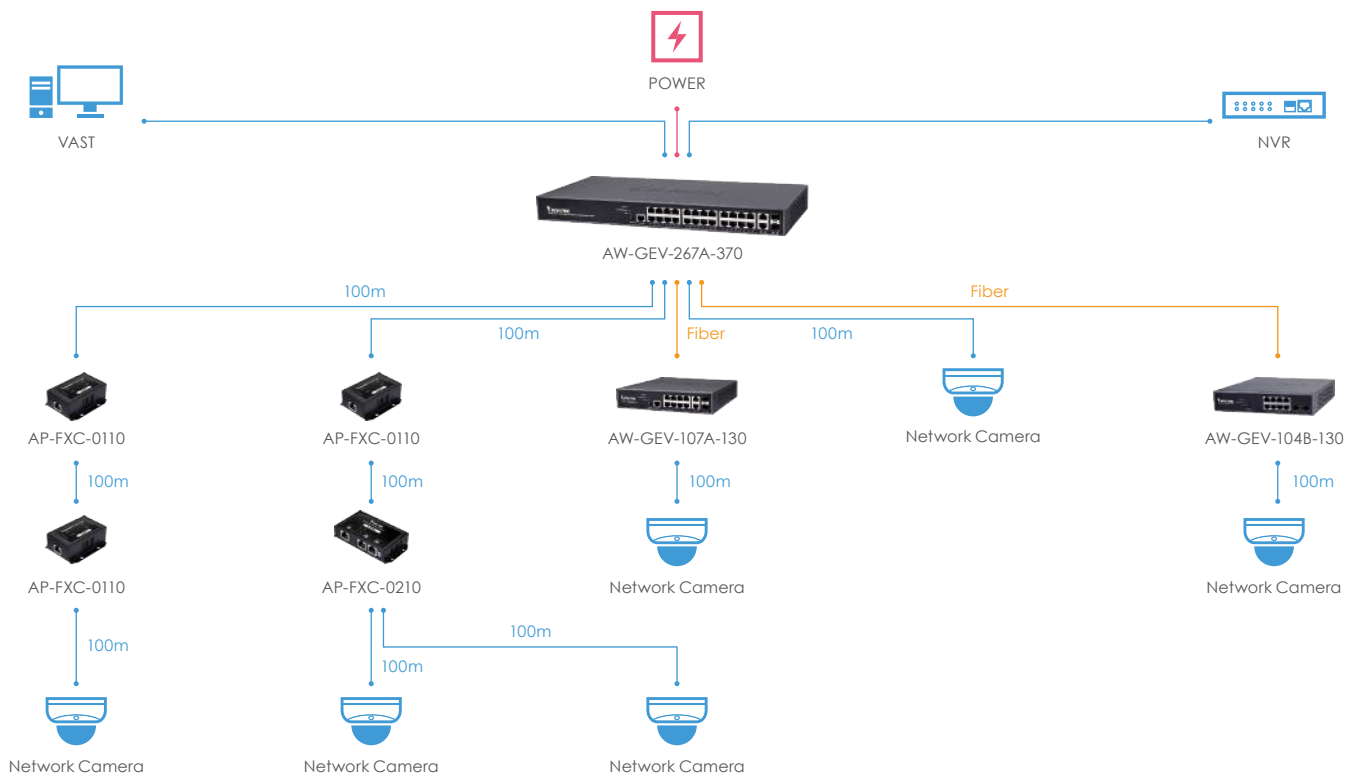
Hierarchical topology view allows administrators to easily build a VLAN.



## Live Stream

Display live streaming camera window in Topology View, Floor View and Google Map View.

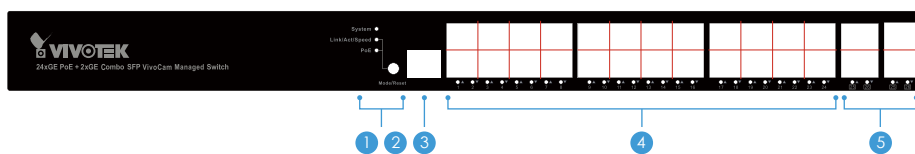
## Application



## Ordering Information

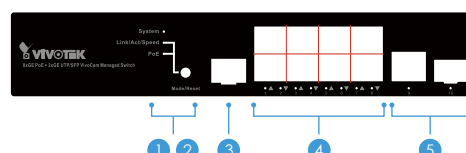
Model Name	Product Description	Model Name	Product Description
AW-GEV-107A-130	VivoCam L2+ 8xGE PoE + 2xGE Combo + 1xRJ45 Console Managed PoE Switch, 130W	PoE Extender	
AW-GEV-267A-370	VivoCam L2+ 24xGE PoE + 2xGE Combo + 1xRJ45 Console Managed PoE Switch, 370W	AP-FXC-0110	1-Port Indoor FE PoE Extender
Web Smart PoE Switch		AP-FXC-0210	2-Port Indoor FE PoE Extender
AW-GEV-104B-130	VivoCam Web Smart 8xGE PoE + 2xGE SFP Managed PoE Switch, 130W	IP Surveillance Device	
AW-GEV-184B-250	VivoCam Web Smart 16xGE PoE + 2xGE SFP Managed PoE Switch, 250W	Network Camera	All VIVOTEK Network Cameras
AW-GEV-264B-370	VivoCam Web Smart 24xGE PoE + 2xGE SFP Managed PoE Switch, 370W	Video Server	All VIVOTEK Video Servers
		NVR	All VIVOTEK NVRs
		CMS	VAST

## AW-GEV Series Front View



### AW-GEV-267A-370

- LED Indicators
- Mode Selector & Reset Button
- RJ45 Console Port x1
- PoE RJ45 Ethernet Ports x24
- Combo Gigabit Ethernet Ports x2



### AW-GEV-107A-130

- LED Indicators
- Mode Selector & Reset Button
- RJ45 Console Port x1
- PoE RJ45 Ethernet Ports x8
- Combo Gigabit Ethernet Ports x2

## Technical Specifications



Model	AW-GEV-107A-130	AW-GEV-267A-370
Product Description	VivoCam L2+ Managed PoE Switch 8xGE PoE + 2GE Combo + 1xRJ45 Console	VivoCam L2+ Managed PoE Switch 24xGE PoE + 2xGE Combo + 1xRJ45 Console
<b>Managing IP Surveillance Functions</b>		
<b>Management</b>		
Auto Search VIVOTEK Device	up to 1000 pcs	up to 1000 pcs
Surveillance Device Management List	√	√
DHCP Server Function	√	√
VIVOTEK Device Account/Password Setting	√	√
VIVOTEK Device Static IP Setting	√	√
VIVOTEK Device Grouping Setting for VLAN	√	√
VIVOTEK Device Name Edit	√	√
VIVOTEK Camera/Video Server Reboot/Restore Default	√	√
VIVOTEK Device Re-direct Link	√	√
VIVOTEK Device On/Off Line Status	√	√
<b>Graphic View</b>		
Topology View	√	√
Floor View	√	√
Google Map View	√	√
<b>Maintenance</b>		
VIVOTEK Camera/Video Server Configuration File Export/Import	√	√
VIVOTEK Cameras/Video Server Configuration File Management	√	√
Floor Image Management	√	√
Export Surveillance Management Device List	√	√
Security	√	√
Trouble Shooting	√	√
Traffic Monitoring	√	√
<b>Managed Layer 2+ PoE Switch Functions</b>		
<b>Port Configuration</b>		
10M/100M/1G RJ45 PoE Port	8	24
GE RJ45/SFP Combo Port	2	2
RJ45 Console Port	1	1
Total Ports	11	27
Auto MDI/MDI-X	√	√
IEEE 802.3x	√	√
IEEE 802.3u	√	√
IEEE 802.3z	√	√
IEEE 802.3ab	√	√

## Technical Specifications

Model	AW-GEV-107A-130	AW-GEV-267A-370	
Product Description	VivoCam L2+ Managed PoE Switch 8xGE PoE + 2GE Combo + 1xRJ45 Console	VivoCam L2+ Managed PoE Switch 24xGE PoE + 2xGE Combo + 1xRJ45 Console	
<b>HW Performance</b>			
Switching Bandwidth	20Gbps	52Gbps	
Forwarding Capacity	14.88 Mpps	38.68 Mpps	
MAC Address	8K	8K	
Jumbo Frames	9600 Bytes	9600 Bytes	
Surge Protection	Per Port 6KV	Per Port 6KV	
<b>Layer 2+ Features</b>			
Spanning Tree	IEEE802.1D (STP)	V	V
	IEEE802.1w (RSTP)	V	V
	IEEE802.1s (MSTP)	V	V
VLAN	802.1Q VLAN	4096 VLAN IDs	4096 VLAN IDs
	SVL/IVL	V	V
	Private VLAN	V	V
	Guest VLAN	V	V
	Q-in-Q (Double Tag)	V	V
	802.1v Protocol VLAN	V	V
	MAC-based VLAN	V	V
	IP Subnet-based VLAN	V	V
Trunking	IEEE 802.3ad LACP	Up to 10 ports in a group, max. up to 5 groups	up to 16 ports in a group , max. up to 13 groups
	Static Trunk	Up to 10 ports in a group, max. up to 5 groups	up to 16 ports in a group , max. up to 13 groups
IGMP Snooping (v1/v2/v3)	V	V	
Loop Detection	V	V	
<b>L3 Features</b>			
IP Host Table	V	V	
IPv4/v6 Static Routing	V	V	
Static ARP	V	V	
DHCP Server	V	V	
<b>QoS Features</b>			
Hardware Queues	8	8	
Class Of Service	Port Based	V	V
	802.1p	V	V
	CoS	V	V
	DSCP	V	V
	TCP/UDP (IPv4/IPv6)	V	V

## Technical Specifications

Model		AW-GEV-107A-130	AW-GEV-267A-370
Product Description		VivoCam L2+ Managed PoE Switch 8xGE PoE + 2GE Combo + 1xRJ45 Console	VivoCam L2+ Managed PoE Switch 24xGE PoE + 2xGE Combo + 1xRJ45 Console
Rate Limiting	Ingress	✓	✓
	Egress	✓	✓
Priority Queue Scheduling	WRR	✓	✓
	Strict Priority	✓	✓
IPv4 QoS (QCEs)		✓	✓
IPv6 QoS (QCEs)		✓	✓
<b>Security</b>			
Port Security (MAC-based)		✓	✓
IEEE802.1x		✓	✓
ACLs	Source and Destination MAC, VLAN ID or IP Address, Protocol, Port	✓	✓
	(DSCP) / IP Precedence	✓	✓
	TCP/ UDP Source and Destination Ports	✓	✓
	802.1p Priority	✓	✓
	ICMP Packets	✓	✓
IP Source Guard (IP-MAC-Port Binding)		✓	✓
Storm Control		✓	✓
RADIUS Authentication (RFC2138)		✓	✓
DDoS Prevention		✓	✓
Layer 3 Isolation (Allow/Disallow Routing between IP Subnets)		✓	✓
HTTPs and SSL (Secured Web)		✓	✓
SSH v1.5/v2.0 (Secured Telnet Session)		✓	✓
BPDU Guard		✓	✓
STP Root Guard		✓	✓
DHCP Snooping		✓	✓
<b>Management</b>			
SNMP (v1, v2c, v3)		✓	✓
RMON (1, 2, 3 & 9 groups)		✓	✓
Software Upgrade		✓	✓
Configuration Export/Import		✓	✓
DHCP	Client	✓	✓
	Option 66	✓	✓
	Option 67	✓	✓
Event/Error Log	Syslog	✓	✓

## Technical Specifications

Model		AW-GEV-107A-130	AW-GEV-267A-370
Product Description		VivoCam L2+ Managed PoE Switch 8xGE PoE + 2GE Combo + 1xRJ45 Console	VivoCam L2+ Managed PoE Switch 24xGE PoE + 2xGE Combo + 1xRJ45 Console
Management Access Filtering	SNMP	✓	✓
	Web	✓	✓
	Telnet	✓	✓
Port Mirroring		✓	✓
MLD Snooping		✓	✓
LLDP (IEEE802.1AB)		✓	✓
LLDP-MED		✓	✓
CDP		✓	✓
NTP/ SNTP (RFC2030)		✓	✓
TFTP		✓	✓
<b>IPv6 Support</b>			
Dual IPv6/IPv4 Stack		✓	✓
IPv6 Web/SSL		✓	✓
IPv6 SNTP (Simple Network Time Protocol)		✓	✓
IPv6 Telnet Server/SSH		✓	✓
IPv6 Ping Trace Route		✓	✓
IPv6 TFTP		✓	✓
IPv6 RADIUS		✓	✓
IPv6 Syslog		✓	✓
IPv6 DNS Client		✓	✓
IPv6 Protocol-based VLANs		✓	✓
IPv6 SNMP		✓	✓
<b>PoE Management</b>			
ON/OFF Config		✓	✓
Alive Checking for PD		✓	✓
Power Delay		✓	✓
7/24 On/Off Scheduling		✓	✓
<b>PoE Function</b>			
Number of PoE Out Ports		8	24
PoE Output Power		Per Port 54VDC, Max. 30W	Per Port 54VDC, Max. 30W
802.3at/af Standard Compatible		✓	✓
Over Current Protection		✓	✓
Circuit Shorting Protection		✓	✓
Total PoE Power Budget		130W	370W
Power Pin Assignment		1/2(+), 3/6(-)	1/2(+), 3/6(-)
PoE PD Auto Detection		✓	✓



# Technical Specifications

Model	AW-GEV-107A-130	AW-GEV-267A-370
Product Description	VivoCam L2+ Managed PoE Switch 8xGE PoE + 2GE Combo + 1xRJ45 Console	VivoCam L2+ Managed PoE Switch 24xGE PoE + 2xGE Combo + 1xRJ45 Console

## Environmental Specifications

Operating Temperature	0°C ~ 50°C (32°F ~ 122°F)	0°C ~ 50°C (32°F ~ 122°F)
Operating Humidity	10 ~ 90% RH	10 ~ 90% RH
Storage Temperature	-20°C ~ 70°C (-4°F ~ 158°F)	-20°C ~ 70°C (-4°F ~ 158°F)
Storage Humidity	10 ~ 90% RH	10 ~ 90% RH

## Mechanical Specifications

Dimensions	44 (H) x 220 (W) x 242.2 (D) mm	44 (H) x 442 (W) x 211 (D) mm
Weight	2.3 kg	3.1 kg

## Power Source

AC Input	100V-240V	100V-240V
Frequency	50~60 Hz	50~60 Hz
Power Consumption	150W	430W

## Certifications

Certifications	CE, FCC, LVD, VCCI, C-Tick	CE, FCC, LVD, VCCI, C-Tick
----------------	----------------------------	----------------------------

## Accessories

Optional Accessories	SFP Transceiver SFP-1000-MM85-X5: MMF, 0.5 km, 0°C ~ 70°C SFP-1000-MM13-02: MMF, 2 km, 0°C ~ 70°C SFP-1000-SM13-10: SMF, 10 km, 0°C ~ 70° SFP-1000-SM13-40: SMF, 40 km, 0°C ~ 70°C	SFP Transceiver SFP-1000-MM85-X5: MMF, 0.5 km, 0°C ~ 70°C SFP-1000-MM13-02: MMF, 2 km, 0°C ~ 70°C SFP-1000-SM13-10: SMF, 10 km, 0°C ~ 70° SFP-1000-SM13-40: SMF, 40 km, 0°C ~ 70°C
----------------------	--	--

## Dimensions

