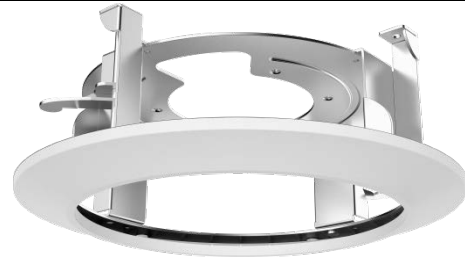


## DS-1671ZJ-SD11

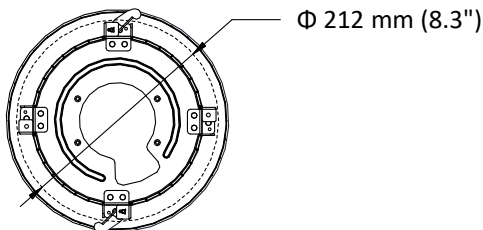
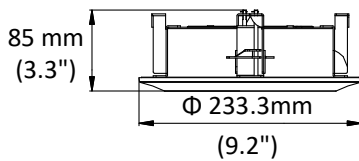
In-Ceiling Mounting Bracket for 4-inch PTZ Camera



### Features

- Steel material with surface spray treatment
- Magnetic design facilitates 4-inch PTZ camera installation
- In-ceiling mounting saves the installation space

### Dimension



### Available Model

DS-1671ZJ-SD11

### Parameter

Model	DS-1671ZJ-SD11
Parameters	In-Ceiling Mounting Bracket for 4-inch PTZ Camera
Appearance	Hikvision White
Material	Steel
Dimension	Φ 233.3 mm × 85 mm (9.2" × 3.3")
Cable Hole	Φ 212 mm (8.3")
Weight	640 g (1.4 lb.)

### Notes

- The bracket should be installed on the flat ceiling.
- The ceiling must be capable of supporting at least 3 times as much as the total weight of the camera and the bracket.
- The maximum load capacity of the bracket is 4 KG (8.8 lb.).