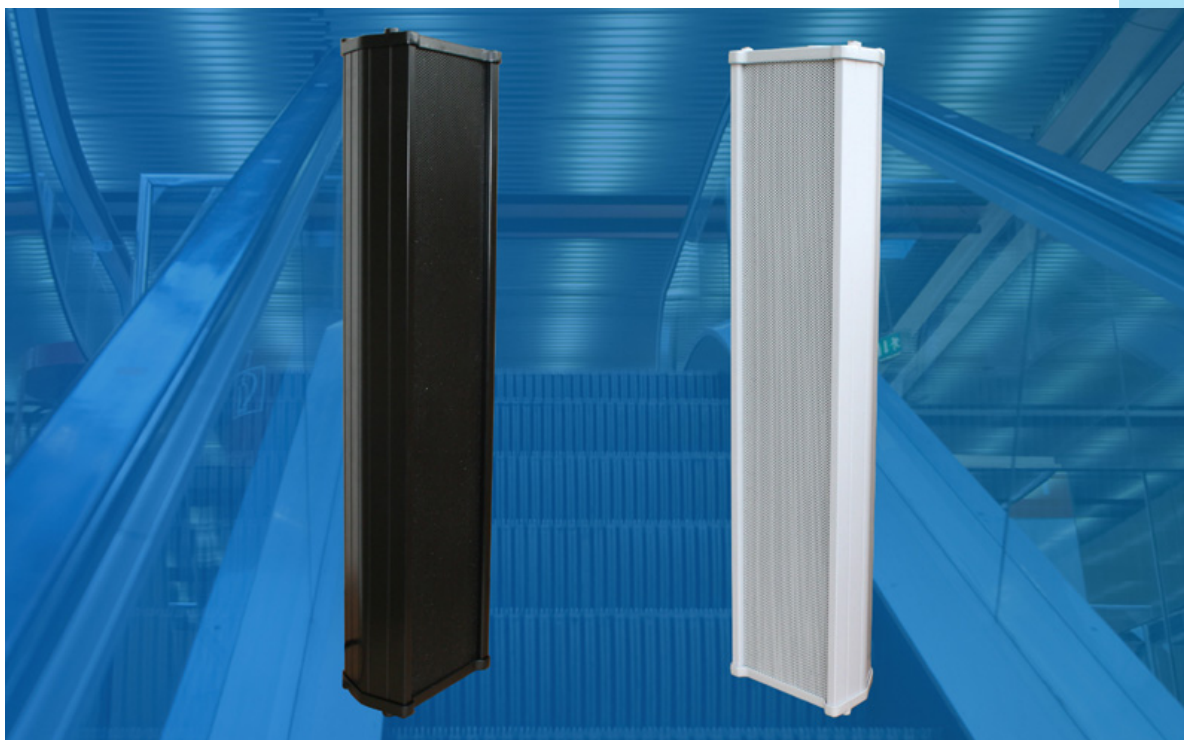


WEATHER-PROOF-ALU-COLUMN-SPEAKER CS-50-WA/EN5424



CS
50
WA
EN
5424

ALU

WEATHER
PROOF

50 W
40 W
30 W
20 W

- **WEATHER-PROOF** THROUGH STABLE ALUMINIUM-CASING
- **ALU-GRILL & ABS-INNER-PANEL, V2A BRACKET & SCREWS**
- **50-40-30-20-WATT** 100-VOLT-TAPS VIA CABLE & JUNCTION BOX
- OPTIONAL **CERAMIC-CLAMP & THERMO-FUSE** AVAILABLE
- **BALL-ATTACK-CERTIFICATED** VERSION ACC. TO **DIN 18032/III** OBTAINABLE
- SPECIAL **DIN 912-ISO 4762** SCREWS

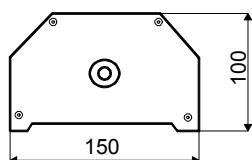
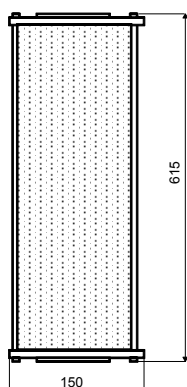
- **CS-50WA/EN-5424-CERTIFICATED VERSION:
ORDER-NUMBER:**

CS-50WA/EN-5424 (TYPE-B / WEATHER-PROOF-OUTDOOR-CERTIFICATED)
CPD-NR: 1293-CPD-0300

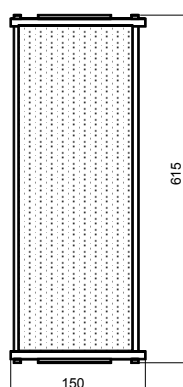
TECHN. DATA:

CS-50WA/EN5424 WHITE & BLACK

Nominal Power:	60-Watt
Power-Consumption:	100V-50-40-30-20-Watt
Frequency-Range:	70-18000 Hz
EN-Sensitivity 1W/4M:	80,03 dB
SPL max 50W/4M:	96 dB
SPL 1W/1M max. EASE/Ulysses:	99 dB (2,6 kHz)
SPL 50W/1M max. EASE/Ulysses:	114 dB (2,6 kHz)
Radiation H (0,5/1/2/4kHz):	360°/194°/122°/79°
Radiation V (0,5/1/2/4kHz):	117°/ 49°/ 26°/13°
EN-5424-Degree:	EN-Type-B, weather-proof-outdoor-certificated
Dimensions:	615 x 150 x 100 mm
Weight:	3,9 Kg
Colour:	black & white



EN-5424-PAGE-61-A

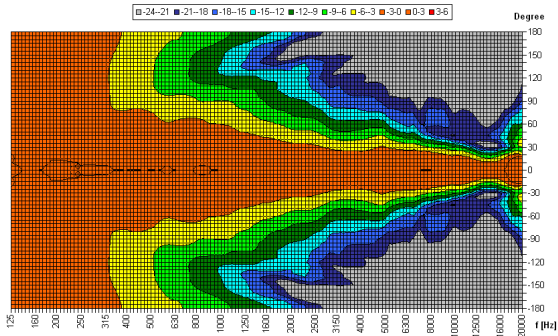


RADIATION DATA WEATHER-PROOF-ALU-COLUMN-SPEAKER CS-50-WA/EN5424

Testing Method	Axis	500Hz	1000Hz	2000Hz	4000Hz
EN5424	HOR	360°	194°	122°	79°
EN5424	VER	117°	49°	26°	13°
EASE/ULYSSES	HOR	360°	180°	110°	80°
EASE/ULYSSES	VER	90°	50°	25°	15°

Source Data: D:\Strech\Elko-Schmid\Elko-Schmid\GLL\CS50WA\Data\VER\VERCS50-HOR.FOX Copyright by Four-Audio GmbH & Co KG Licensed to AAC

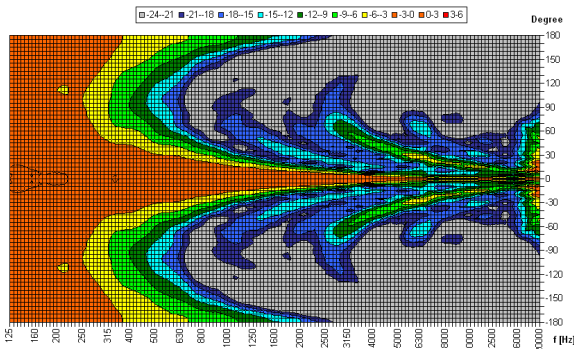
Horizontal Isobars of: Elko-Schmid CS-50WA



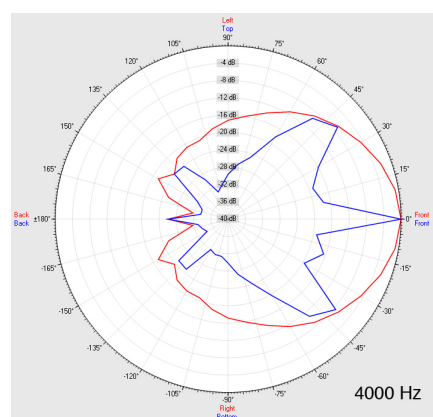
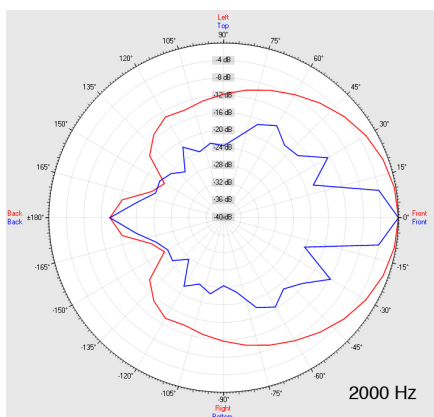
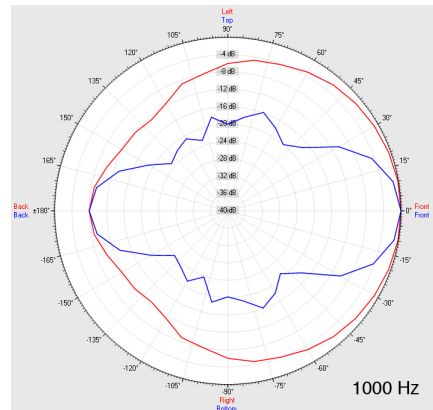
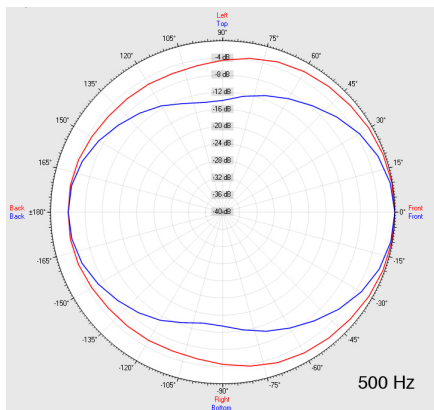
Parameters: Cyclic Move: 0° ; Symmetry: average sym ; Freq Smooth: 1/3 Oct ; Ang Resol.: 5° ; Rel. to 0° Axis: 0°

Source Data: D:\Strech\Elko-Schmid\Elko-Schmid\GLL\CS50WA\Data\VER\VERCS50-VER.FOX Copyright by Four-Audio GmbH & Co KG Licensed to AAC

Vertical Isobars of: Elko-Schmid CS-50WA



Parameters: Cyclic Move: 0° ; Symmetry: average sym ; Freq Smooth: 1/3 Oct ; Ang Resol.: 5° ; Rel. to 0° Axis: 0°



CS
50

WA

EN
5424

ALU

WEATHER
PROOF

50 W

40 W

30 W

20 W